



STANDARD MOUNT OPL UTILITY FREE LINT FILTERS

AVAILABLE IN 3 SIZES (2,000, 3,000 & 7,000 CFM)

MULTI-DRYER STANDARD MOUNT SELF CLEANING OPL LINT FILTERS



AF-7 (STD) Exterior Installed



AF-4 (STD) Interior Installed



AF-3 (STD) Exterior Installed

- **No Utilities - Zero Operating Cost**
- **Low Cost Install**
- **Prevent damage to air handling equipment**
- **Meets State and National EPA discharge standards**

- **Reduce lint build-up in exhaust ducting, increasing fire safety**
- **Eliminate dryer lint bypass by up to 98%**
- **Reduces lint-build-up in the ducts downstream, increasing fire safety**

- **Optional fire suppression keeps laundry and equipment protected**
- **Smallest Footprint to fit in most OPL laundries**
- **Designed to work indoors or outdoors**

THE NEED FOR A LINT FILTER AND HOW IT WORKS

This new state-of-the art lint filter has evolved from over 30 years of research and development to be the optimum solution for catching up to 98% of all bypassed lint produced by OPL textile dryers.

Three problems that are minimized by reducing lint are:

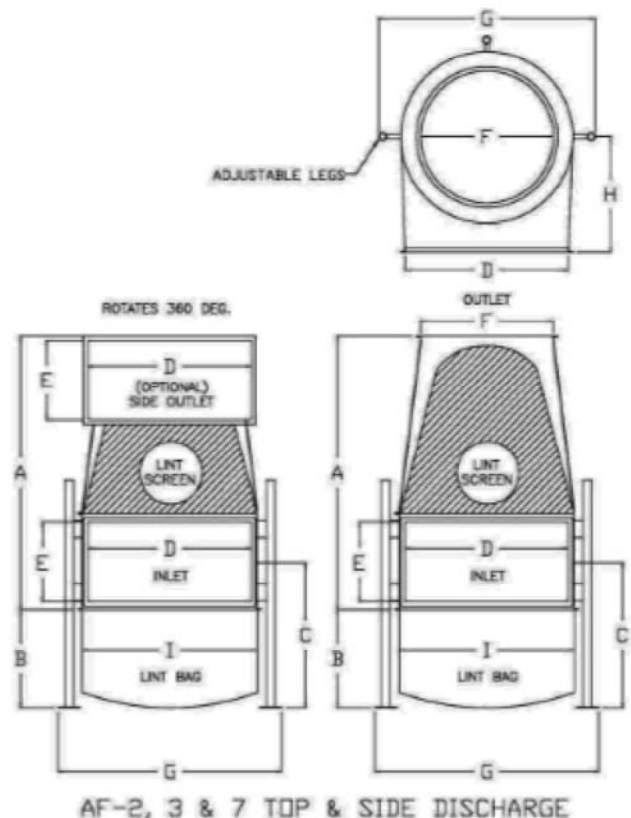
- Dryer exhaust may be in close proximity to air handling equipment such as A/C units, cooling apparatus and fresh air intake systems.
- When there is a longer exhaust run from the dryer to the outside atmosphere there is a likely hood that the inside of the duct will accumulate with lint causing dryer inefficiency and creating a potential fire hazard.
- Often the Laundry Room is located near the front of the building. When this occurs, the dryer exhaust duct(s) are directed to the front of the building. This results in an unsightly mess that detracts from the neat appearance of the landscaping.

NO POWER SUPPLY OR COMPRESSED AIR REQUIRED

- Airfree filters are designed to filter single or multiple dryers 35-170lbs.
- UL Class 2 fire retardant fiberglass will not support combustion
- Indoor/outdoor construction with UV protection resists extreme weather
- Available top or side exhaust outlet for easy low cost installation
- Equipped with the same screen as all Energenics lint filters
- Designed to filter multiple dryers from 50 lbs. to 170 lbs.
- Dryers internal screens are porous to facilitate air flow, Energenics screens are much larger and more tightly woven, allowing superior filtration
- Duct runs longer than 50 feet should be equipped with Energenics Airflow Optimizer

FLOOR/PAD OR CEILING SUPPORTED

Model #	AF-2 STANDARD	AF-3- STANDARD (STD)	AF-7 STANDARD
CFM	2,000	3,000	7,000
Oper.	100	110	150
Wt. Lbs.			
Ship	125	135	175
Wt. Lbs.			
A	46	57	62
B	24	24	24
C	33	33	33
D	26	26	37
E	18	18	18
F	20	22	30
G	34	34	45
H	15	15	25
I	29	29	39
J	27	38	41
K	NA	NA	NA
L	NA	NA	NA
M	NA	NA	NA



Sold and Serviced By:



Chef de file en équipements de buanderie

6565 Rue Abrams, Ville St. Laurent, QC H4S 1X9
 Phone: 1-888-427-2626 • Fax: 1-514-331-0800
 email: info@harcoinc.ca • www.harco.com



1470 Don St.
 Naples, FL 34104
 Tel. 239-643-1711
 Fax 239-643-6081

Customer Service 800-944-1711

www.energenics.com