

The Most Versatile Small Piece Accumulator/Folder Series

Skyline SP Series

CHICAGO®



Multi-Lane Small Piece Folding/Stacking System Available In Multiple Lane Configurations and Sizes

Designed for ironing lines dedicated to the high volume production of precision folded and flat stacked small pieces, this versatile multi-lane folder will process a variety of small ironed flatwork items, such as pillowcases, napkins, bar towels, aprons, surgical items, and tumble dry towels (consult factory for details on which SP models will process item types and sizes) in a choice of zero, one or two primary folds. SP flat stacks folded or unfolded items (such as napkins) in a choice of stack heights on its built-in conveyors. SP is extremely flexible because of its ability to simultaneously process different pieces and fold patterns in each lane to match current production needs.

Standard Features

- Flexibility to perform stacks with one or two primary folds or flat stacks with no folds in each lane.
- One or two primary folded or unfolded items in selectable stack heights (consult factory for item size limitations for each type of operation and item).
- CHI-Touch PC based full color touch screen control for all operating, testing, adjustment and diagnostic functions.
- Programmable parameters customizable for various piece sizes and weights.
- Full bypass capability.
- AC frequency inverter drive with soft start/stop and variable speed control up to 120 FPM for small pieces and up to 180 FPM for large pieces.
- Low maintenance, versatile design.
- Complete production data memory displays individual lane counts.
- Individual conveyor advance button for each lane.
- Audible jam alarm and jog reverse for ease of operation and maintenance.
- Individual air pressure regulators with main gauge and auto drain.
- Individual and resettable lane counters monitor production on each lane.
- Independent lanes allow for two or more different item types to be processed at the same time.
- Self-cleaning upward photosensors for reduced maintenance and improved reliability on built-in crossfold section.
- Input conveyor can be matched to any ironer discharge height.
- Connectable to Chicago automatic data accumulation and reporting system as well as third party metric systems.

Flexibility

Skyline SP offers the maximum number of folding and stacking functions available in one machine. To assure consistent and accurate folding, all folds are performed by inverter driven rolls and CHI-Touch controls. No mechanical switches or clamps are used. Optional full size built-in crossfolder is available for large pieces such as sheets. Crossfolded items can then be discharged to a side receiving shelf or optional large piece stacker. SP-3 models include ability to perform apron folding/stacking consisting of two primary folds with reversing conveyors and air assist. Aprons can be fed without pre-folding. For direct transfer of items from SP models to a master conveyor system, the Chicago Bridge™ linen transition conveyor is a popular option..



SP-5 shown with optional built-in large piece crossfolder and stacker for unmatched flexibility to also fold sheets or large table linen.

Available Models

SP-2

For those applications with limited space or lower volume production needs, but still requiring the advantages of folding and stacking of ironed small pieces, Chicago has developed the SP-2—a space-saving compact design available in a 60” usable width (other widths available). Compatible with the Chicago Prestige, Imperial 224 Compact and Imperial 232 Compact ironer models, the SP-2 has all the features and benefits of the wider SP-4/5 models but in a two lane compact version. The SP-2 can also be matched with the Chicago DrawBridge Linen Transition Conveyor.



SP-3



For apron folding and stacking applications for both ironed and tumble dried items Chicago has developed the SP-3, a three lane primary folder with stacking capability in each lane. The SP-3 avoids the troublesome tangling issues of apron strings by performing two lateral primary folds with reversing conveyors and air assist. Aprons can be fed without manual pre-folding thereby increasing production and eliminating the ironed crease in the linen. Each primary fold is a measured fold that captures the apron strings within the apron preventing them from catching in the machine where jams can occur. The SP-3 can also fold and stack many of the typical linen items commonly folded on any Chicago SP model including many types of terry towels.

Optional DrawBridge Linen Transition Conveyors

DrawBridge is a system of paired Bridge units controlled by a single panel. It is designed to be positioned at the back of the Skyline SP CT, using individual hinged inlet conveyors between folder and Bridges that can be raised for easier maintenance access to the inner Bridge units as well as the back of the folder. DrawBridge can also be used with single or dual stackers (hinged easy access conveyor is optional for this configuration).

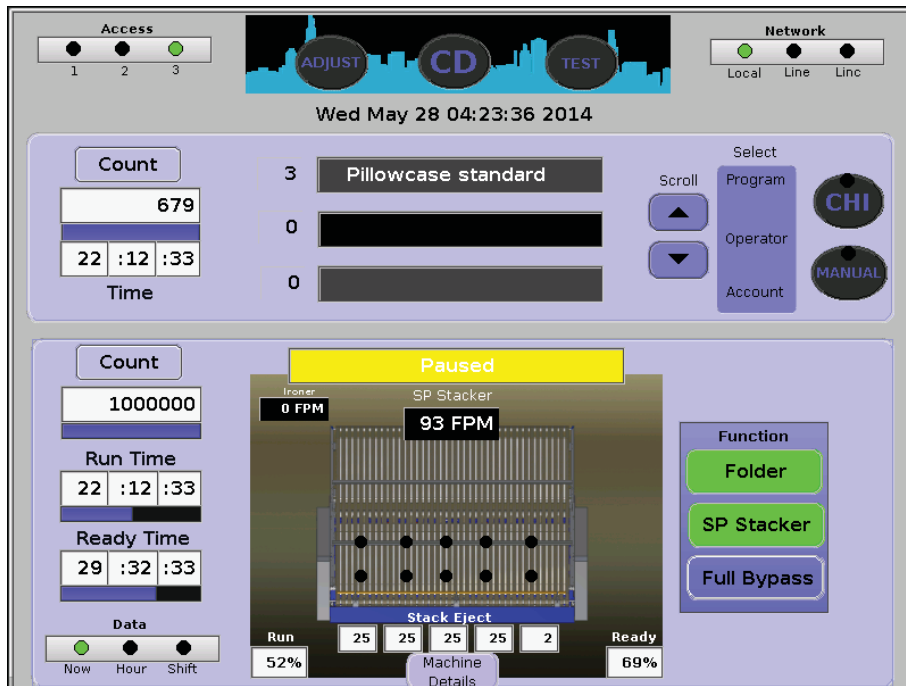
SP-4



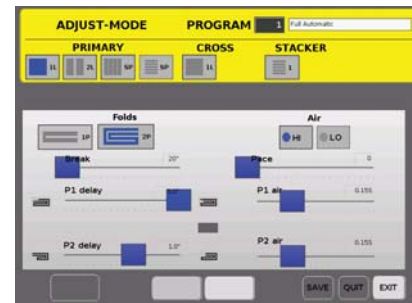
Suggested Minimum/Maximum Piece Sizes for 120” Usable Width Machines

Min.	Max.
Length 16” (400mm)	60” (1525mm)
Width: 4-Lane Models 16” (400mm)	26” (660mm)
Width: 5-Lane Models 16” (400mm)	20” (500mm)

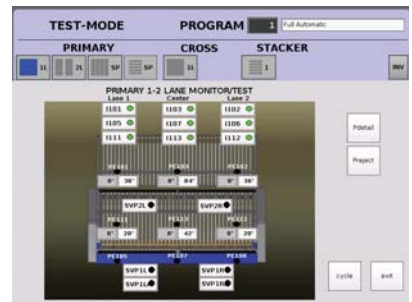
Consult factory for processing other size items.



Skyline SP Folder Main Screen



Adjustment Screen



Test Mode Screen

All the traditional CHI features and functions such as automatic or manual item selection operation, piece counts, self-testing, fault display and built-in diagnostics are incorporated into an even faster PC-based color 12" display touch screen control. Its advanced architecture merges CHI's familiar simple intuitive control sequences with the technology to meet today's and tomorrow's needs.

Designed to meet the rigors of rugged laundry environments, the CHI•Touch platform offers better visualization of functions for operators, floor management, and service teams. Its graphical interface has the flexibility to work with current and future reporting and networking technology, while maintaining CHI's field-proven flexibility to work in any laundry's environment.

Chicago's Blanket Blaster uses the same logic and major components as other Chicago equipment to assure consistency, parts availability, familiarity and ease of use for operators, management, and maintenance staff.

Visit Chicago's website www.chidry.com for easy access to the latest floorplans, technical specifications, etc.

A Complete Range of Separating, Feeding, Ironing, Folding, and Sorting Options

Because Chicago specializes only in flatwork finishing equipment, it can offer the world's widest range of high production separating, feeding, ironing, folding and sorting equipment. Complete flatwork finishing systems range from automated multi-roll systems producing over 2000 pounds per hour, to compact ironers for small on-premise laundries.

Chicago's performance record is unmatched in tens of thousands of installations in commercial, hospitality, health care, textile rental, and institutional laundries. An experienced Chicago professional will be pleased to make an objective equipment recommendation based on your production,

space, utility and budget requirements. All equipment is designed and built in Chicago for complete quality control and prompt service and parts availability, including overnight delivery if necessary.

Contact your local Chicago distributor or the factory sales assistance office for a no-obligation analysis of your needs. Visit our newly redesigned and now mobile-friendly website www.chidry.com for easy access to current product brochures, detailed floor plans, and specifications, as well as videos of select Chicago products in action.



CHICAGO DRYER COMPANY
2200 North Pulaski Road
Chicago, Illinois 60639-3737 USA

Phone • 773.235.4430
Fax • 773.235.4439
Web • www.chidry.com
Email • chicago@chidry.com

Harco
Chef de file en équipements de buanderie
6565 Rue Abrams, Ville St. Laurent, QC H4S 1X9
Phone: 1-888-427-2626 • Fax: 1-514-331-0800
email: info@harcoinc.ca • www.harcoinc.com