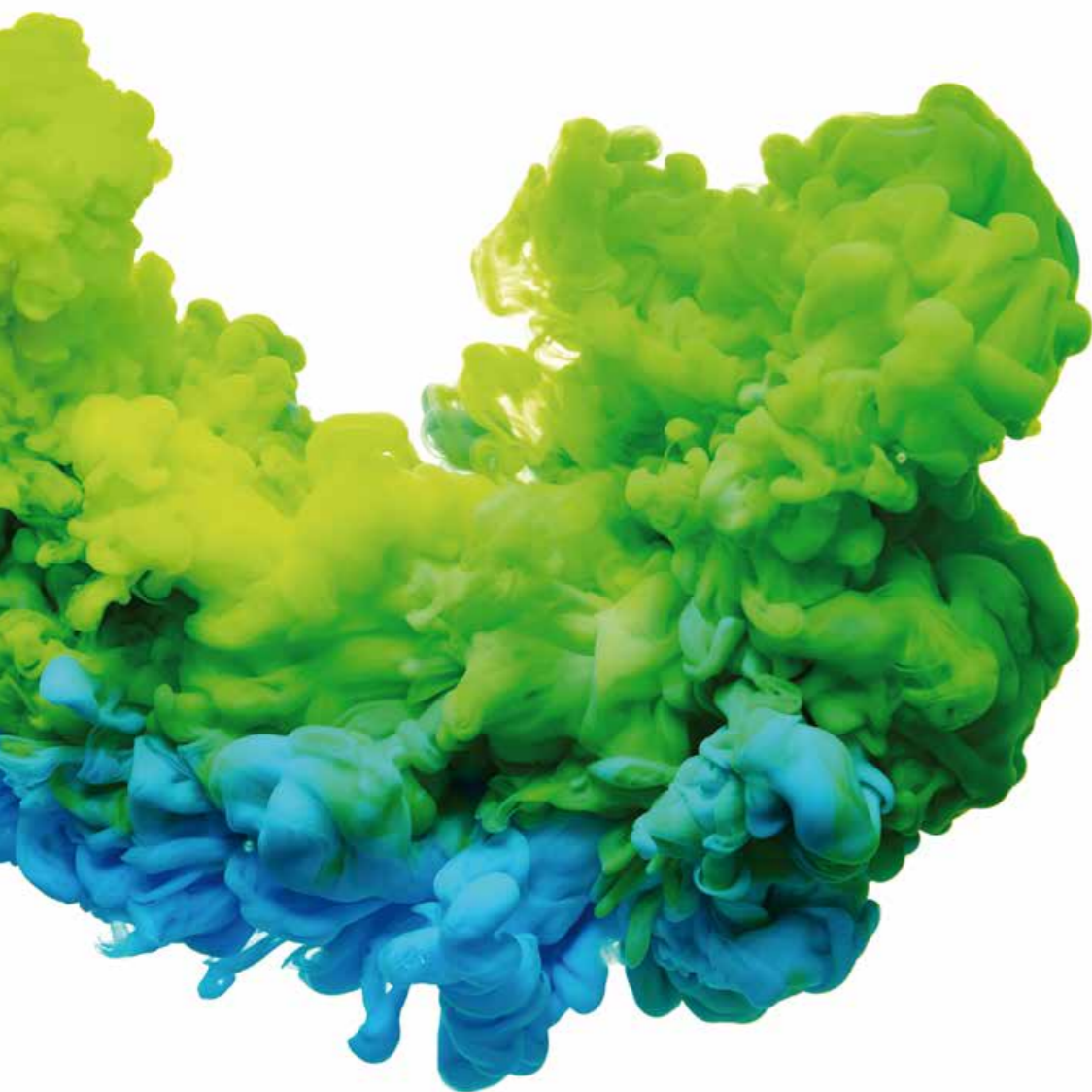


Front washers


The new DOMUS high, medium and low spin front washers offer an advanced design and technology, combined with a huge variety of accessories and options.

High G Factor, the touchscreen TOUCH II microprocessor with many features, connectivity, versatility.


They are designed to satisfy the laundry needs of the most varied businesses, always taking into consideration efficiency and productivity as main goals.




ECOVOLUTION by DOMUS

 **HIGH SPIN WASHERS | G FACTOR 450**

CONTROL TYPE	HEATING	CAPACITY							
		10-11 kg	13-14 kg	18-20 kg	25-28 kg	35-38 kg	45-50 kg	60-65 kg	120-133 kg
TOUCH II Programmable Control	Electric, hot water and steam	DHS-11 TOUCH II	DHS-14 TOUCH II	DHS-18 TOUCH II	DHS-27 TOUCH II	DHS-36 TOUCH II	DHS-45 TOUCH II	DHS-60 TOUCH II	DHS-120 TOUCH II
TOUCH II COIN Coin laundry	Electric and hot water	DHS-11 TOUCH II	DHS-14 TOUCH II	DHS-18 TOUCH II	DHS-27 TOUCH II	DHS-36 TOUCH II	-	-	-

 **MEDIUM SPIN WASHERS | G FACTOR 300**

CONTROL TYPE	HEATING	CAPACITY			
		10-11 kg	13-14 kg	18-20 kg	25-28 kg
TOUCH II Programmable Control	Electric, hot water and steam	DMS-11 TOUCH II	DMS-14 TOUCH II	DMS-18 TOUCH II	DMS-27 TOUCH II
TOUCH II COIN Coin laundry	Electric and hot water	DMS-11 TOUCH II	DMS-14 TOUCH II	DMS-18 TOUCH II	DMS-27 TOUCH II

 **LOW SPIN WASHERS | G FACTOR 200**

CONTROL TYPE	HEATING	CAPACITY					
		10-11 kg	13-14 kg	18-20 kg	25-28 kg	35-38 kg	60-66 kg
TOUCH II Programmable Control	Electric, hot water and steam	DLS-11 TOUCH II	DLS-14 TOUCH II	DLS-18 TOUCH II	DLS-27 TOUCH II	DLS-36 TOUCH II	DLS-60 TOUCH II
TOUCH II COIN Coin laundry	Electric and hot water	DLS-11 TOUCH II	DLS-14 TOUCH II	DLS-18 TOUCH II	DLS-27 TOUCH II	DLS-36 TOUCH II	DLS-60 TOUCH II

HIGH SPIN

MEDIUM SPIN

LOW SPIN



DHS
G FACTOR 450/350

HIGH SPIN RANGE

- ✔ Soft mounted washers, free standing
- ✔ Panels in skinplate
- ✔ R.P.M. between 678 - 1.231
- ✔ Easy to install, no needs of fixation to the floor, no extra costs
- ✔ Savings due to high extraction of water (45% residual humidity)



DMS
G FACTOR 300

MEDIUM SPIN RANGE

- ✔ Hard mounted washers
- ✔ Anchoring to floor with anchoring base
- ✔ Panels in skinplate
- ✔ R.P.M. between 836 - 929
- ✔ Savings due to high extraction of water (55% residual humidity)



DLS
G FACTOR 200/150

LOW SPIN RANGE

- ✔ Hard mounted washers
- ✔ Anchoring to floor with anchoring base
- ✔ Panels in skinplate
- ✔ R.P.M. between 505-759
- ✔ Savings due to high extraction of water (65% residual humidity)

ECOENERGY



TOUCH II

- ✔ **TOUCH II**, user friendly and totally programmable microprocessor with a 7" touch screen and 29 preset programs
- ✔ **USB Connection**. PC software free of charge for programming, traceability, data analysis...
- ✔ **Remote communication**
- ✔ **Traceability standard**
- ✔ **Wet cleaning ready**
- ✔ **Videos on display: ads, instructions** (useful for coin laundry)
- ✔ **37 languages**
- ✔ **8 dosing signals as standard + optional 6 extra dosing signals**



VERSATILITY

- ✔ **Make to order: customisation**
New possibility to customise the machines from factory with the available options
- ✔ **OPL < > Coin / Token**
Standard models easily transformable with coin/token kits
- ✔ **Electric < > Hot water**
Standard electric models easily transformable to hot water models
- ✔ **Drain valve < > Pump**
Standard models easily transformable
Easy access and service
- ✔ **Wet cleaning**
All washers have all features to use wet cleaning programs



G FACTOR

- ✔ **High G-FACTOR for all range of washers comparing with competitors**
G-FACTOR 450 for High spin washers
G-FACTOR 300 for Medium spin washers
G-FACTOR 200 for Low spin washers
- ✔ **High G-Factor reduces residual moisture and drying time**



CONNECTIVITY

- ✔ **Remote technical service**
Machine monitoring, machine error warning, management for traceability and statistics. Remote desk and data recovery for technicians and maintenance, software update, etc.
- ✔ **Management for laundries: OPL and COIN**
Our DOMUS IoT solution allows you to manage your laundry business (i.e. create discount programs for customers, get statistics, traceability and laundry monitoring).
- ✔ **Remote payment:** App for payments, cashless payment by scanning a QR code, promotions and machine booking



EFFICIENCY

- ✔ **Water savings**
Possibility of configuring three levels of savings
- ✔ **Optimal loading:** manual indication of weight
- ✔ **Intelligent Consumption:** automatic adjustment of water and soap consumptions (standard)
- ✔ **Prepared to be connected to water recovery tanks ECOTANK**
- ✔ **Low water consumption**
Standard washing program consumes less than 7 liters of water per kg and cycle
- ✔ **High G-FACTOR 450 for High spin machines**
Reduced residual moisture > reduced drying time
- ✔ **Water RE-CYCLE** (recirculation of bath water)



ERGONOMICS

- ✔ **Biggest door diameters in the market**
Helpful, mainly for big capacity washers, for loading and unloading operations
- ✔ **Easy opening/closing system for door lock**
- ✔ **Plinths for 11, 14, 18, 27 and 36 kg models**
To align loading height (door base at 850 mm)



MAINTENANCE

- ✔ **Hinged panel** Easy and ergonomic access to control panel parts
- ✔ **Equivalent parts**
Most key parts are the same for all models parts are same for all models (contactors, electronic devices, gear...)
- ✔ **Easy access to parts for reparability**
- ✔ **Technical menu:** traceability, error diagnosis, machine monitoring, software update...



Programmable microprocessor TOUCH II

The new TOUCH II is a substantial evolution from the previous microprocessor which includes many more features mainly based on achieving more efficiency, versatility and connectivity among others.

User friendly and totally programmable microprocessor with **7" touch screen and 29 preset programs**

Configuration of washing and spinning speed
Complete regulation of water levels
Regulable washing temperature from 20°C to 90 °C
Standard WET CLEANING system

Videos on display

Ads, instructions (useful for coin laundries)



8 dosing signals as standard + optional 6 extra dosing signals



37 languages

Available and easy to configurate, thanks to DOMUS aim to be accessible to everyone.



USB Connection

PC software (Wash Control) free of charge for programming, traceability, data analysis...



G-FACTOR

DOMUS washer extractors, whether high, medium or normal spin, are the ones with the highest G-Factor in the market, which ensures minimum residual moisture, and this translates into less energy costs during the drying cycle.

High G-Factor reduces residual moisture and drying time



EFFICIENCY

DOMUS washer extractors offer a wide variety of efficient features to make sure that the washing cycles use only the needed water and chemicals, not more.

Water savings

Possibility of configuring three levels of savings

Low water consumption

A standard washing program consumes less than 7 litres of water per kg and cycle, and an ECO program up to 6 litres.

Optimal loading

Intelligent consumption

Automatic adjustment of water and soap (standard)

High G FACTOR 450 for high spin machines

Reduced residual moisture > reduced drying time

Water re-cycle

Optional kit to increase the care of the linen: recirculation of the bath water, which increases the water flow with chemicals, shortens the cycle and improves the effectiveness without mechanical action



ECOTANK

Ready to be connected to water recovery tanks

Domus washer extractors, with Touch II microprocessor and double drain, can be connected to the new Domus Ecotank which allows the water recovery, achieving important water and energy savings.



VERSATILITY

To adapt to the needs of the different businesses and sectors with the smallest investment.

Make to order: customization

New possibility to customize the machines from factory with the available options

Electric <> Hot water

Standard electric models easily transformable to hot water models

Drain valve <> Pump

Standard models easily transformable
Easy access and service

Wet Cleaning[®]

Thanks to DOMUS constant development, our models are equipped with the features to use WET CLEANING programs:

- ✓ Fully programmable TOUCH II
- ✓ Total control of temperature and water levels
- ✓ Programmable washing speed: very low (13 R.P.M.)
- ✓ Rhythm on/off 3seg/40seg
- ✓ Total control of dosing signal



DOMUS washer extractors between 10 and 36 kg are specially designed to be used in coin laundry businesses. This is available both for soft mounted machines DHS and hard mounted machines DMS and DLS.

OPL <> COIN

A new feature of Domus washers is its easy transformation from an OPL to a COIN machine.

Three available options:

1



Coin / Token

There are several kits depending on the currency of each country, which can be used with a token or with a new mechanical coin kit. Both to be ordered with a coin box kit.



2



Central Pay

The machines can be connected to the central pay with the central pay kit to control a single box with money.



3



Remote payment

Machines ready for remote communication: allows programming, management and technical feedback. Multi payable systems: price updating, etc.

Open system

Domus equipment is prepared to work with any external payment system (by means of multi-point data).

C&G

CONNECTIVITY



Responsible App, native for tablets and smartphones. Offline version available

OPL

COIN

Benefits for the dealer

Remote technical management

- Machine monitoring.
- Machine error warning.
- Management for traceability and statistics.
- Remote desk and data recovery for technicians and maintenance.
- Software update.
- Renting of machines.
- Invoicing by cycles.

APP for the owner / dealer
APP for the user of a laundry shop

Benefits for the owner

Laundry management

- Production and program/cycles.
- Working times.
- Management for traceability and statistics.
- Download of data in excel.
- Remote desk and data recovery for technicians and maintenance.
- Software update.
- Renting of machines.

Benefits for the owner

Coin laundry management

- To monitor the business:
 - create programs/discounts
 - control of opening times
 - control of income
 - creation of machine groups (shops, models, etc.)
- Management for traceability and statistics.
- Download of data in excel.
- Remote desk and data recovery for technicians and maintenance
- Software update.
- Renting of machines.

Benefits for the user

Customizable app

- according to type of customer: neighbourhood association, boarding schools, etc.
- Booking of machines: availability of free machines and booking.
- Cashless payment by QR code, promotions.
- Push notifications/contact by means of an e-mail.
- Year-to-date invoicing.
- Client fidelity by means of promotions, cards, discounts, etc.

Location

of machines registered all over the globe



IOT available in all TOUCH II washers and dryers. Connection by WIFI or Ethernet





ERGONOMICS

As health and safety at work had become an important issue, our equipment is designed to be the most comfortable for the user.

Biggest door diameters in the market

Helpful, mainly for big capacity washers, for loading and unloading the garments

Easy opening/closing system for door lock

Plinths for 11, 14, 18, 27 and 36 kg models

To align loading height (door base at 850 mm)

Reversible door



MAINTENANCE

One of DOMUS concerns is to make life easier for our clients. That includes offering quality equipment and parts of reputed brands, which demand little maintenance.

Easy access for reparability

Washers are designed to offer an easy maintenance and reparability

Equivalent parts

Most key parts are the same for all models (contactors, electronic devices, gear,...)

Hinged panel

Easy and ergonomic access to the panel

Technical menu

Machine monitoring, machine error warning, management for traceability and statistics. Remote desk and data recovery for technicians and maintenance, software update, etc.



Washer extractors technical data

HIGH SPIN									
	UNIT.	DHS-11	DHS-14	DHS-18	DHS-27	DHS-36	DHS-45	DHS-60	DHS-120
DRUM									
Load capacity (kg) 1:9 / 1:10	Kg	11/10	14/13	20/18	28/25	39/35	50/45	67/60	133/120
Volume	l	100	130	180	250	350	450	600	1200
Diameter	mm	532	620	700	770	860	918	1048	1360
Depth	mm	425	430	470	530	602	720	684	840
GENERAL DETAILS									
Washing speed / Spining speed	r.p.m.	50/1.231	50/1.138	47/1.071	45/1.024	42,5/966	42,5/934	38/875	34/678
G Factor	-	450	450	450	450	450	450	450	350
Noise level	dB	< 70	< 70	< 70	< 70	< 70	< 70	< 70	< 70
Coin laundry version	-	YES	YES	YES	YES	YES	NO	NO	NO
Double drainage	-	EXT.-OPT	OPT.	OPT.	OPT.	OPT.	OPT.	OPT.	OPT.
Weighing System	-	OPT.	OPT.	OPT.	OPT.	OPT.	OPT.	OPT.	OPT.
Tilting System	-	NO	NO	NO	NO	NO	OPT.	OPT.	OPT.
SLUICE option	-	NO	NO	NO	NO	NO	NO	NO	NO
DOOR									
Height center door / Height base door	mm	630/370	700 / 440	765 / 450	865 / 560	885 / 540	1.190 / 830	1.190 / 830	1.330 / 900
Diameter	mm	373	373	460	460	560	560	560	700
POWER									
Motor	kW	0,75	1,1	2,2	4	4	7,5	11	15
Electric heating power	kW	6	9	12	18	21	28,8	36	-
Total electric power (electric model)	kW	6,25	9,4	12,75	19,2	22	31,3	40	-
Total electric power (steam model)	kW	0,75	1,1	2,2	4	4	7,5	11	15
CONNECTIONS									
Steam intake (steam mod.)	inch	1/2"	1/2"	1/2"	3/4"	3/4"	3/4"	3/4"	1-1/4"
Water intake	inch	3/4"	3/4"	3/4"	3/4"	3/4"	1"	1"	1-1/2"
Drain	inch	3"	3"	3"	3"	3"	3"	3"	4"
DIMENSIONS									
Width	mm	692	788	884	979	1.095	1.478	1.478	1.836
Depth	mm	788	869	913	1.041	1.184	1.444	1.444	1.863
Height	mm	1.185	1.307	1.415	1.553	1.598	1.945	1.945	2.245
Net weight	kg	230	250	360	490	750	1.350	1.400	3.950
PACKING DIMENSIONS									
Width	mm	730	830	930	1.040	1.165	1.540	1.540	1.900
Depth	mm	1.000	1.010	1.030	1.160	1.230	1.580	1.580	1.940
Height	mm	1.417	1.560	1.700	1.850	1.920	1.970	1.970	2.290
Gross weight	kg	239	283	393	545	820	1.420	1.520	4.100
Volume	m ³	1,03	1,31	1,63	2,23	2,75	4,79	4,79	8,44

MEDIUM SPIN					
	UNIT.	DMS-11	DMS-14	DMS-18	DMS-27
DRUM					
Load capacity (kg) 1:9 / 1:10	Kg	11/10	14/13	20/18	28/25
Volume	l	100	130	180	250
Diameter	mm	620	620	700	770
Depth	mm	330	430	470	530
GENERAL DETAILS					
Washing speed / Spining speed	r.p.m.	50/929	50/929	45/874	40/836
G Factor	-	300	300	300	300
Noise level	dB	< 70	< 70	< 70	< 70
Coin laundry version	-	YES	YES	YES	YES
Double drain	-	EXT.-OPT	EXT.-OPT	OPT.	OPT.
Weighing System	-	NO	NO	NO	NO
Tilting System	-	NO	NO	NO	NO
SLUICE option	-	NO	NO	NO	NO
DOOR					
Height center door / Height base door	mm	570/310	570/310	655 / 348	700 / 400
Diameter	mm	373	373	460	460
POWER					
Motor	kW	1,1	1,1	2,2	3
Heating (Electric model)	kW	6	9	12	18
Max. power (Electric model)	kW	6,25	9,5	12,75	19
Max. power (Steam and HW model)	kW	1,1	1,1	2,2	3
CONNECTIONS					
Steam intake (steam mod.)	inch	1/2"	1/2"	1/2"	3/4"
Water intake	inch	3/4"	3/4"	3/4"	3/4"
Drain	inch	3"	3"	3"	3"
DIMENSIONS					
Width	mm	719	719	788	884
Depth	mm	684	830	840	1.011
Height	mm	1.158	1.158	1.307	1.340
Net weight	kg	217	239	281	340
PACKING DIMENSIONS					
Width	mm	800	800	840	930
Depth	mm	990	990	1.010	1.150
Height	mm	1.350	1.350	1.500	1.523
Gross weight	kg	225	247	301	370
Volume	m ³	1,07	1,07	1,3	1,6

LOW SPIN							
		DLS-11	DLS-14	DLS-18	DLS-27	DLS-36	DLS-60
DRUM							
Load capacity (kg) 1:9 / 1:10	Kg	11/10	14/13	20/18	28/25	39/35	67/60
Volume	l	100	130	180	250	350	600
Diameter	mm	620	620	700	770	860	1048
Depth	mm	330	430	470	530	602	684
GENERAL DETAILS							
Washing speed / Spining speed	r.p.m.	53/759	53/759	50/714	48/682	45/644	42,5/505
G Factor	-	200	200	200	200	200	150
Noise level	dB	< 70	< 70	< 70	< 70	< 70	< 70
Coin laundry version	-	YES	YES	YES	YES	YES	YES
Double drain	-	NO	OPT.	OPT.	OPT.	OPT.	OPT.
Weighing System	-	NO	NO	NO	NO	NO	NO
Tilting System	-	NO	NO	NO	NO	NO	NO
SLUICE option	-	YES	YES	YES	YES	YES	NO
DOOR							
Height center door / Height base door	mm	570/310	570/310	655 / 348	700 / 400	735 / 440	900 / 540
Diameter	mm	373	373	460	460	560	560
POWER							
Motor	kW	1,1	1,1	2,2	3	4	5,5
Heating (Electric model)	kW	6	9	12	18	21	28,8
Max. power (Electric model)	kW	6,25	9,5	12,75	19	22	31,3
Max. power (Steam and HW model)	kW	1,1	1,1	2,2	3	4	5,5
CONNECTIONS							
Steam intake (steam mod.)	inch	1/2"	1/2"	1/2"	3/4"	3/4"	3/4"
Water intake	inch	3/4"	3/4"	3/4"	3/4"	3/4"	3/4"
Drain	inch	3"	3"	3"	3"	3"	3"
DIMENSIONS							
Width	mm	719	719	788	884	979	1225
Depth	mm	684	684	840	965	1.066	1.279
Height	mm	1.158	1.158	1.307	1.340	1.411	1.640
Net weight	kg	217	239	281	340	473	930
PACKING DIMENSIONS							
Width	mm	800	800	840	930	1.050	1.360
Depth	mm	990	990	1.010	1.150	1.250	1.480
Height	mm	1.350	1.350	1.500	1.523	1.600	1.880
Gross weight	kg	225	247	301	370	503	1.050
Volume	m ³	1,07	1,07	1,3	1,6	2,1	3,73

*DOMUS reserves the right to modify the technical data without notice.



Leaders in Laundry Systems



5610 McAdam Road, Mississauga, Ontario L4Z 1P1
905.890.1220 • 800.387.9503 • Fax: 905.890.7039
email: harco@harcoco.com • www.harcoco.com



ONNERA GROUP